

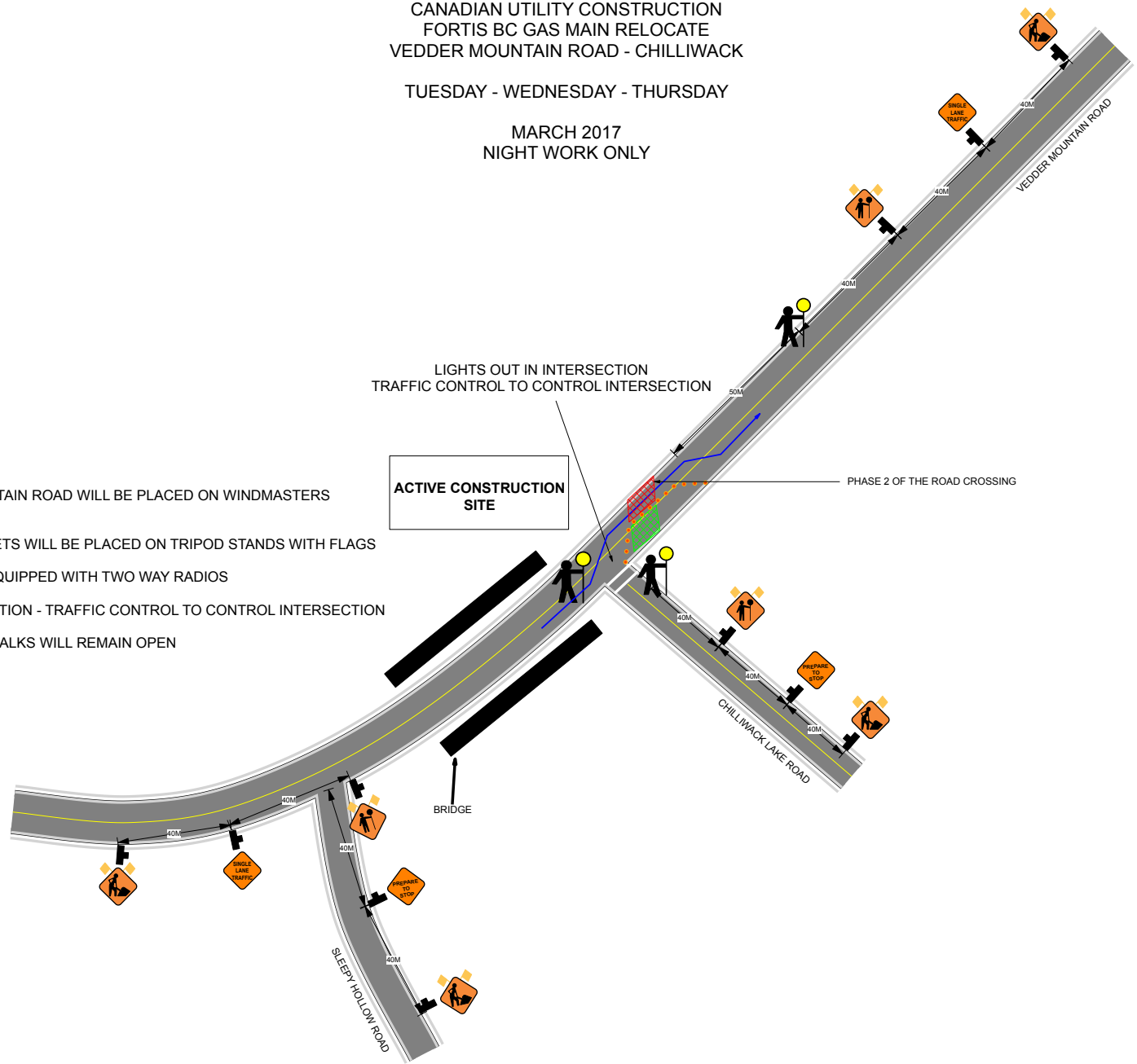


CANADIAN UTILITY CONSTRUCTION
 FORTIS BC GAS MAIN RELOCATE
 VEDDER MOUNTAIN ROAD - CHILLIWACK
 TUESDAY - WEDNESDAY - THURSDAY
 MARCH 2017
 NIGHT WORK ONLY

www.invarion.com



NOTE:
 ALL SIGNS ON VEDDER MOUNTAIN ROAD WILL BE PLACED ON WINDMASTERS WITH FLAGS
 ALL SIGNS ON ALL SIDE STREETS WILL BE PLACED ON TRIPOD STANDS WITH FLAGS
 TRAFFIC CONTROL WILL BE EQUIPPED WITH TWO WAY RADIOS
 LIGHTS OUT IN THE INTERSECTION - TRAFFIC CONTROL TO CONTROL INTERSECTION
 ALL SIDEWALKS AND CROSSWALKS WILL REMAIN OPEN



LEGEND

- DIRECTION TRAFFIC FLOW →
- TUBULAR MARKERS (orange dots)
- WORK AREA (green hatched box)
- SIGN STANDS (black square)
- TRAFFIC CONTROLLER (stick figure with light)
- BUS STOP (pink square)

CANADIAN UTILITY CONSTRUCTION
 ON SITE CONTACT
 DARREN KIRTON 604-968-1700

TRAFFIC CONTROL WILL BE PROVIDED BY
 CANADIAN UTILITY CONSTRUCTION
 MICHELLE PARKS 604-313-5796